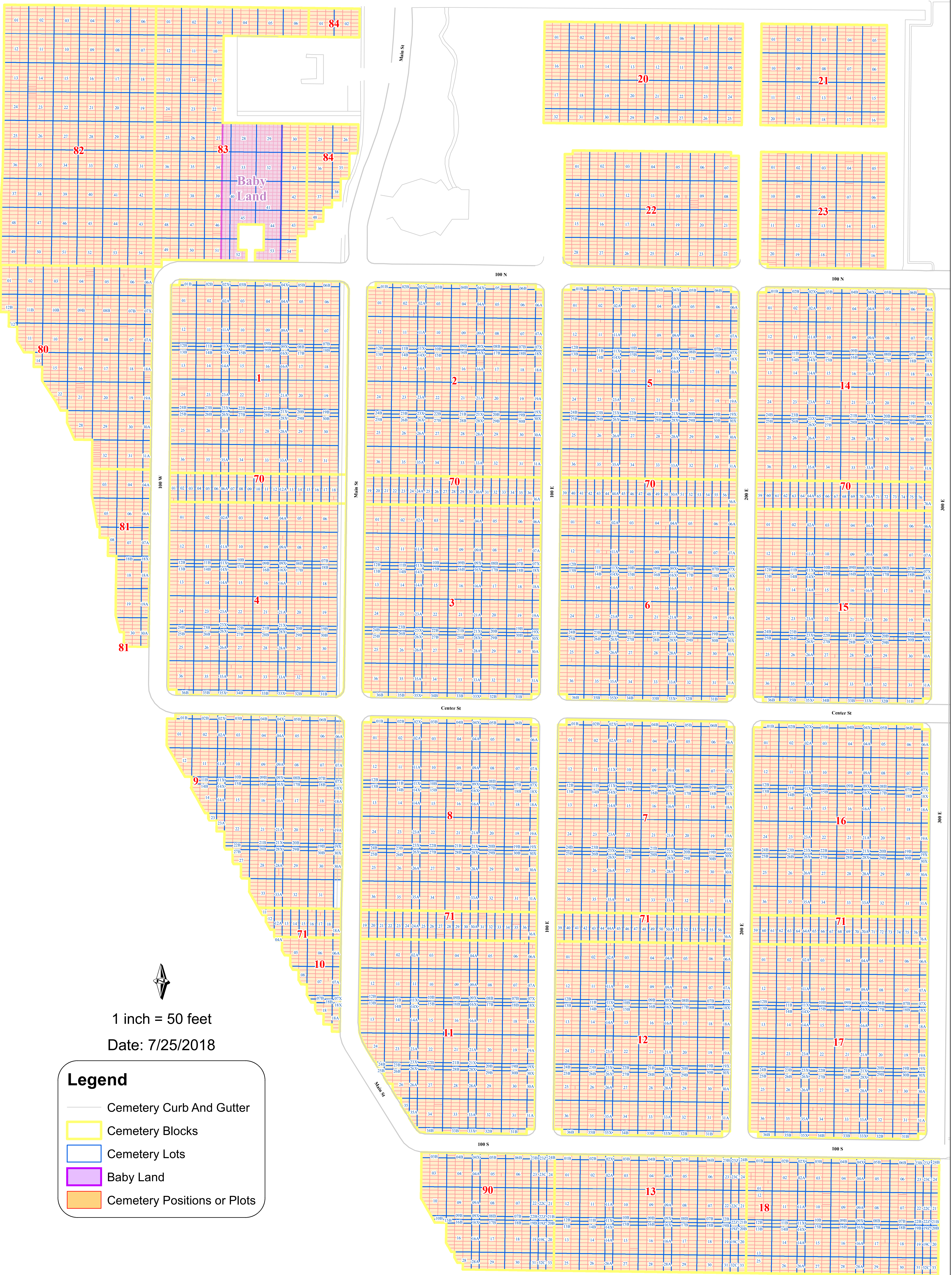


Spanish Fork Cemetery



1 inch = 50 feet
Date: 7/25/2018

Legend

- Cemetery Curb And Gutter
- Cemetery Blocks
- Cemetery Lots
- Baby Land
- Cemetery Positions or Plots

How to use this map to find graves:

1. Find the grave you are looking for by using one of the following search services:
<http://www.spanishfork.org/dept/parkrec/cemetery/alphabet.php>
<http://www.spanishfork.org/dept/parkrec/cemetery/search.php>
<http://www.spanishfork.org/dept/parkrec/cemetery/parents.php>
2. Use the grave location field to find the location on the map. The first number in the grave location is the Block (displayed by the red labels). The second is the Lot (displayed by the blue labels). The third number is the Plot Position signified by the red rectangles. (Lower numbers being on the west, higher numbers being on the east)



Spanish Fork City GIS
40 South Main St
Spanish Fork, UT 84660
GIS Phone Numbers:
(801) 804-4571 (Administrator)
(801) 804-4570 (Intern)
(801) 804-4572 (Intern)

Disclaimer: Spanish Fork City makes no warranty with respect to the accuracy, completeness, or usefulness of these maps. Spanish Fork City assumes no liability for direct, indirect, special, or consequential damages resulting from the use or misuse of these maps or any of the information contained herein. Portions may be copied for incidental uses, but may not be resold.